

**Accordiva** *SecuExpress 2*  
*Standard Version*

**User's Guide**

**Accordiva, Inc.**  
June 2009

## **Accordiva SecuExpress**

© 2005-2009 Accordiva, Inc. All rights Reserved. No part of this publication may be reproduced, distributed or transmitted in any form or by any means, electronic or mechanical, including but not limited to photocopying, recording or storing in any database or retrieval system, or translated into any language in any form without the prior written consent of Accordiva, Inc.

## **Licenses and Trademarks**

Accordiva, the Accordiva logo, Accordiva SecuExpress are trademarks and/or registered trademarks of Accordiva, Inc. Microsoft, Windows, Microsoft Windows Mobile and other Microsoft products referenced herein are either trademarks or registered trademarks of Microsoft Corporation. All other company names, product names and any registered and unregistered trademarks mentioned are used for identification purpose only and remain the exclusive property of their respective owners.

Accordiva, Inc.

<http://www.accordiva.com>

# Table of Contents

■ <b>Welcome to SecuExpress .....</b>	<b>5</b>
■ <b>SecuExpress Watcher .....</b>	<b>6</b>
Overview: SecuExpress Watcher user interface.....	6
Setting the preferences .....	8
Recorded storage allocation .....	8
Recording mode setup .....	9
Video and audio recording .....	10
Access control.....	11
Motion detection .....	12
Defining motion detection mask .....	13
Event notification .....	14
Log checkup .....	14
Snapshot .....	15
Remote access settings .....	15
Notification of IP address change by e-mail.....	16
Searching video recording .....	17
Playing live sound .....	18
Resizing the main user interface for SecuExpress Watcher.....	18
Hiding the menu bar and status bar .....	18
Last recording and detection state at the next program restart .....	19
Watching live video in Internet browser .....	19
■ <b>SecuExpress Remote for PC .....</b>	<b>21</b>
Overview: SecuExpress Remote for PC user interface .....	21
Connecting to remote camera to view live video .....	23

Snapshot .....	24
Resizing the main user interface for SecuExpress Remote for PC ...	25
Hiding the menu bar and status bar .....	25
Disconnecting from remote camera .....	26
■ <b>SecuExpress Player</b> .....	<b>27</b>
Overview: SecuExpress Player user interface .....	27
Playback of video recordings .....	27
Managing video recording database .....	28
■ <b>Index</b> .....	<b>30</b>

## Welcome to SecuExpress

Thank you for choosing Accordiva SecuExpress. SecuExpress is the quick and easy personal surveillance software that monitors and detects the intrusion for your personal properties. Installing SecuExpress on your computer equipped with a Webcam, your computer can quickly turn into a personal surveillance system. SecuExpress also provides you with an easy interface to view the live video remotely on computers through Internet; even you are away from your SecuExpress personal surveillance system

SecuExpress consists of three programs: SecuExpress Watcher, SecuExpress Remote and SecuExpress Player. SecuExpress Watcher is the program that records and detects the intrusion of video source delivered from Webcam.

SecuExpress Remote is the program that you can use to connect to SecuExpress Watcher and view the live video remotely from a computer.

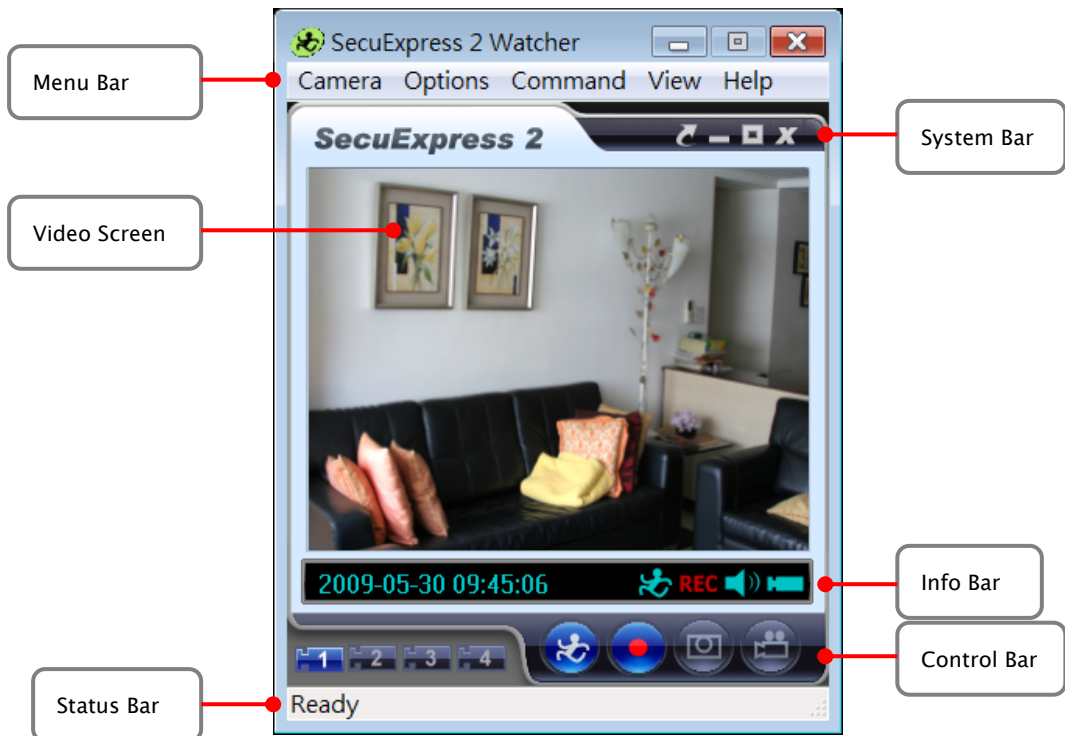
SecuExpress Player is the program for playback of the video recordings recorded by SecuExpress Watcher.

## SecuExpress Watcher

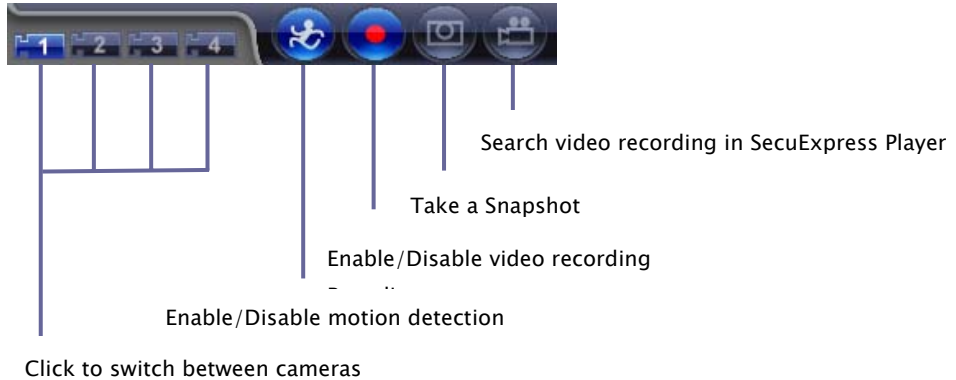
### ***Overview: SecuExpress Watcher user interface***

The easiest way to start learning the program is to familiarize yourself with the user interface. This section introduces you the SecuExpress Watcher user interface.

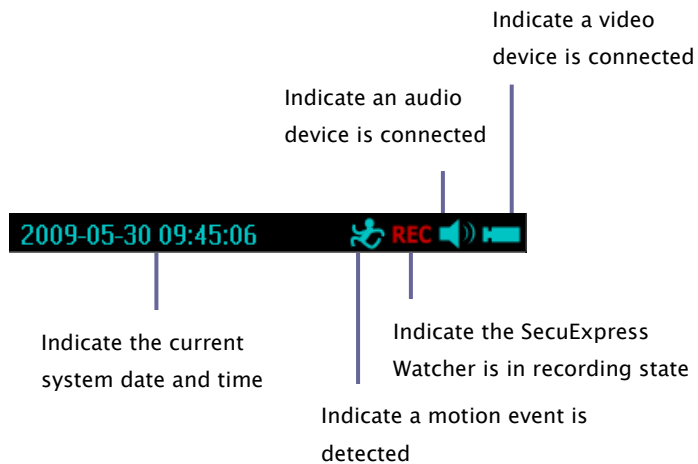
#### **Main User Interface**



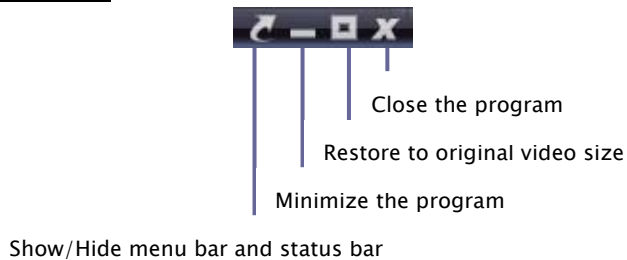
### **Control Bar**



### **Info Bar**

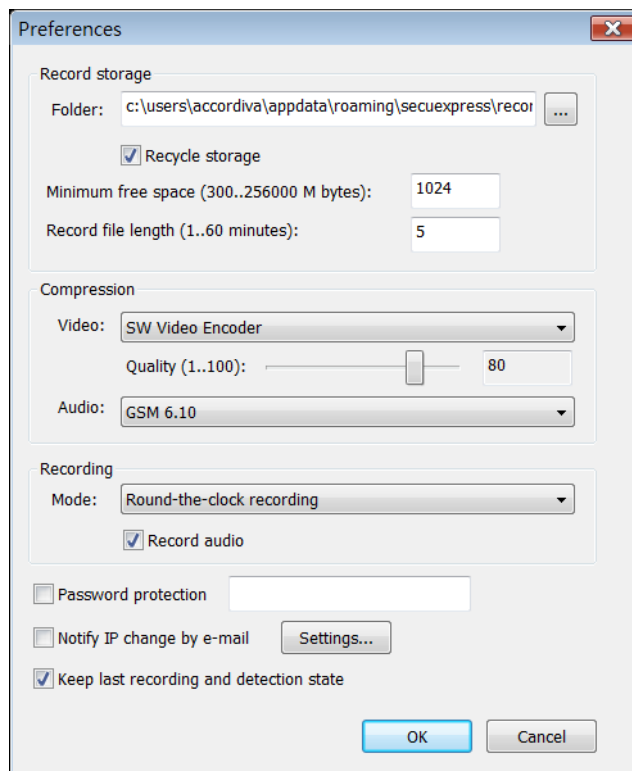


### **System Bar**



## ***Setting the preferences***

Customize the recording settings through the **Preferences** dialog box. To open the **Preferences** dialog box, select **Options: Preferences**. In the **Preferences** dialog box, you can specify the folder where you want to store the recorded data, compression scheme, recording type, password protection, IP address change notification, and recording state.

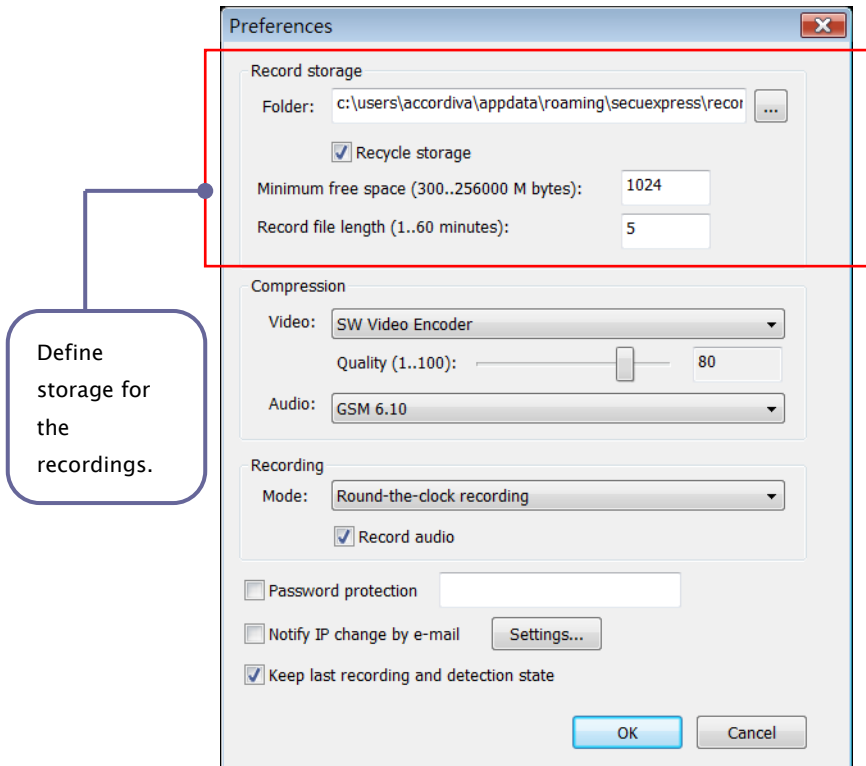


## ***Recorded storage allocation***

Before recording, a certain space in the storage (e.g. hard disk) of your computer should be defined. Select **Options:Preferences** to open the



dialog box. In **Record storage** section, choose the folder where you want the recorded data to be stored. Check **Recycle storage** if you want the storage to be reused after the space is used up. Set **Minimum free space** to leave out some space for operating system usage. Set **Record file length** to break up the file length into the number of minutes you specify.



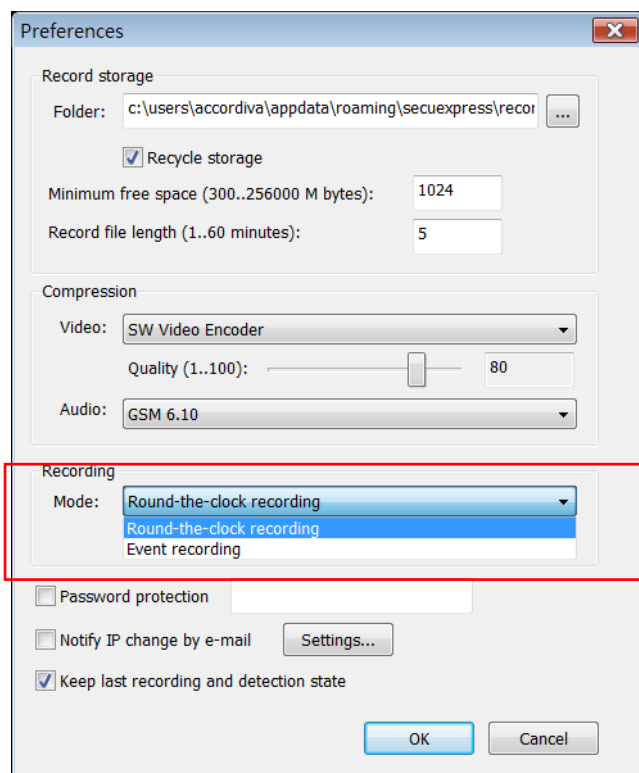
## Recording mode setup

SecuExpress Watcher has 2 different modes of recording: Round-the-clock recording and Event recording.

**Round-the-clock recording** is to record the video continuously.



**Event recording** is to record the video only if a motion event is detected.

To set the intended recording type, select **Options:Preferences**, and choose the appropriate recording type from **Recording Mode** drop down in the **Preferences** dialog box.



## ***Video and audio recording***

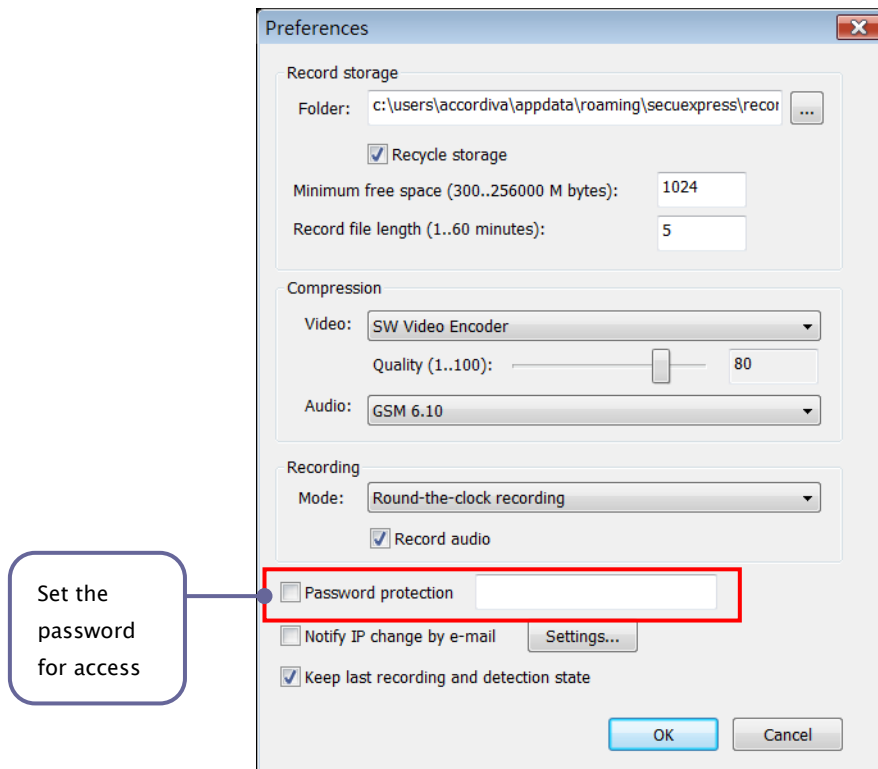
Before starting the video and audio recording, first select appropriate devices from **Devices** menu. The devices above the menu separator bar are video devices and the devices below the menu separator bar are audio devices, available on the computer.

Then, click  on the Control bar or select **Command:Record** to start the recording. To stop recording, click  or select **Command:Record** again.


You can record video only by uncheck the **Record audio** option in the **Preferences** dialog box

## Access control

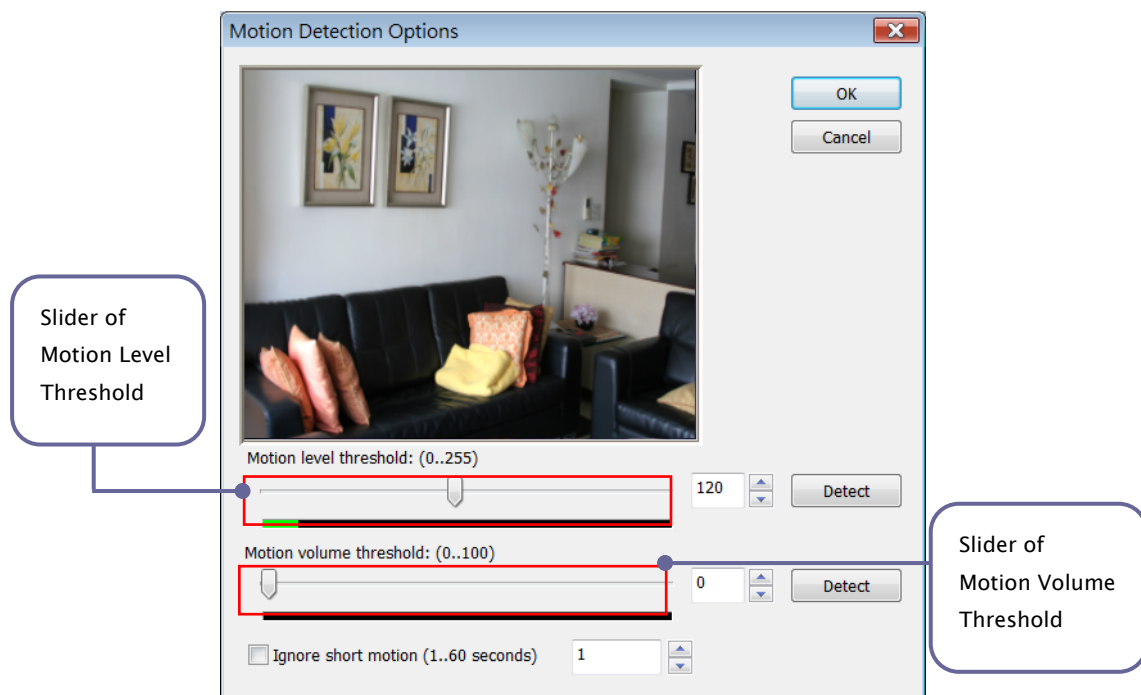
SecuExpress Watcher can be password protected so that anyone accessing SecuExpress Watcher or connecting to SecuExpress Watcher via SecuExpress Remote Viewer to view the live video is requested to enter the password. The password can be set in **Options:Preferences** dialog box.

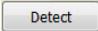


## ***Motion detection***

To enable motion detection, select **Command:Apply Motion Detection** or press  on the Control bar.

You can set the motion detection options by selecting **Options:Motion Detection Options**.



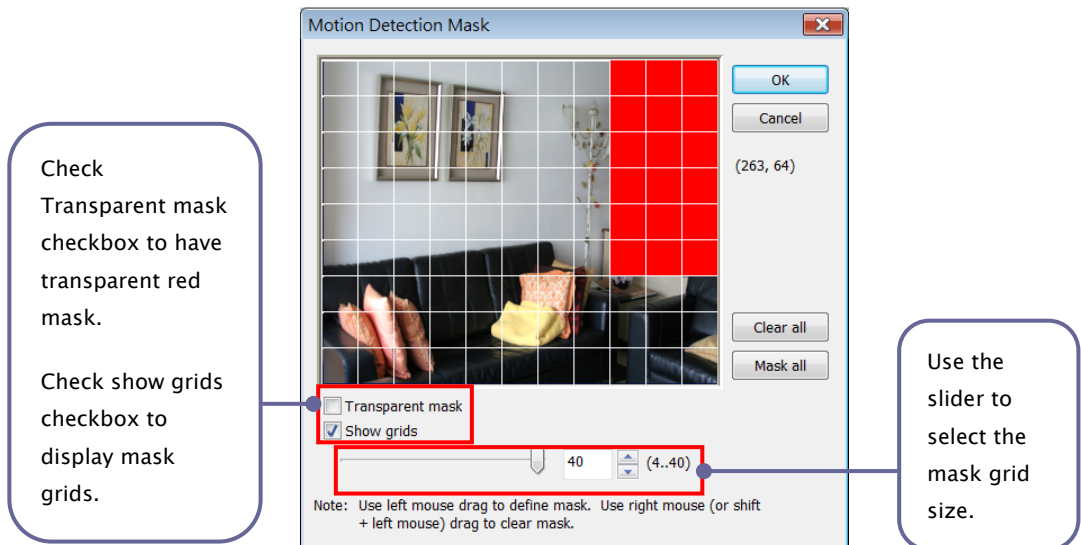
In the dialog box, you can drag the slider of **Motion level threshold**, enter the value, or click  to adjust the sensitivity of a motion. However, make sure there is no motion object in the camera view during the detection. A motion is treated as an event if it is beyond the value you set.

You can adjust the value of **Motion volume threshold** to count in the volume of motion pixels as well.

Sometimes, a short period of motion is detected but you do not want to treat it as an event, for example, bee flies over quickly. You can also check **Ignore short motion** to ignore a motion that is lasted within a period of time that you specify in the edit box of the **Motion Detection Options** dialog box.

## Defining motion detection mask

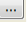
You can identify a particular area within a camera view that you do not want to include in the motion detection area. To specify the unwanted area, select **Options:Motion Detection Mask...** to bring up **Motion Detection Mask** dialog box.

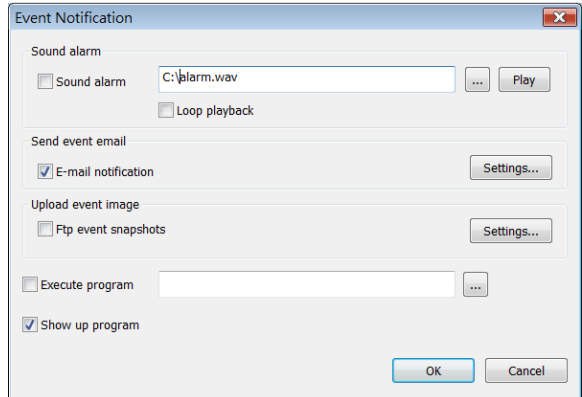


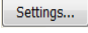
In the **Motion Detection Mask** dialog box, choose the grid size from the slider and paint the unwanted area by left mouse drag. To further refine the painted grids, you can adjust the grid size slider to smaller size to define the detail area. Use right mouse drag to unpaint the area. Check **Show grids** option to display the grids. Check **Transparent mask** checkbox to have transparent red mask.

## ***Event notification***

To specify how to be notified when an event occurs, select **Options: Event Notification** to open the dialog box.

**Sound alarm:** to enable the sound notification, check **Sound alarm** and choose a wav file by clicking . If you want it continuously play, check **Loop playback**.



**E-mail notification:** to enable the email notification, check **Email Notification**. Click  button to specify the email settings.

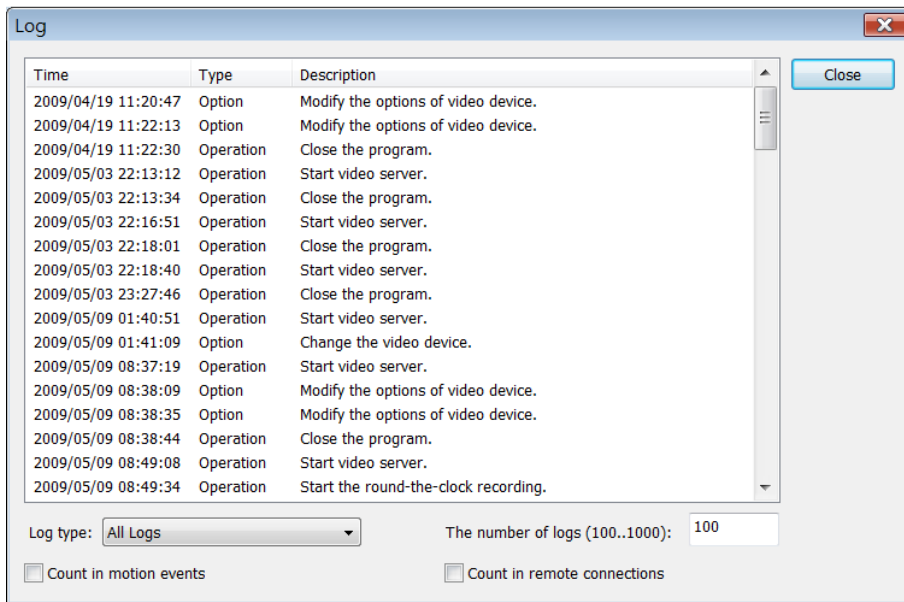
**Ftp event snapshots:** to enable the event snapshot backup on ftp server, check **Ftp event snapshots**. Click  button to specify ftp settings.

**Execute program:** to execute another program as an event notification, check **Execute program** and select a program.


**Show up program:** to bring up SecuExpress from the minimized state when an event is detected, check **Show up program**.

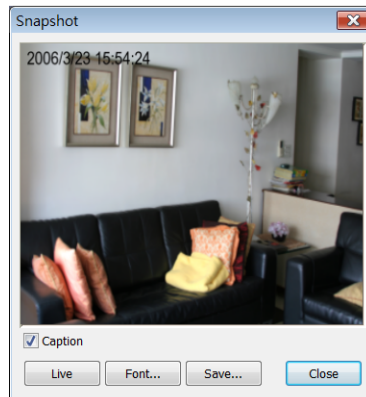
## ***Log checkup***

To view the action logs, select **View: Logs**. The **Log** dialog box contains all types of logs including operation logs, event logs and options logs, with time stamp and description.



## Snapshot

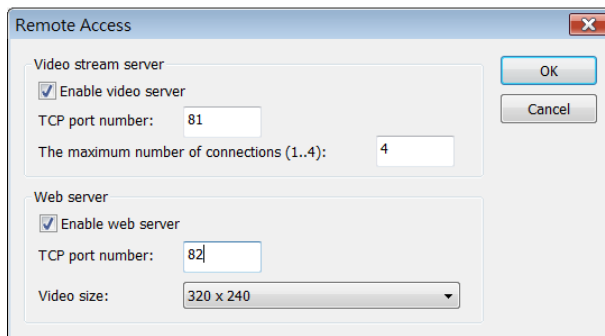
To take a picture of current video frame, select **Command:Snapshot** or click  on the Control bar. After taking a snapshot, the **Snapshot** dialog box appears. You can save the snapshot, change the font settings of the time stamp in the dialog box.



## Remote access settings

SecuExpress Watcher allows you to connect from a remote site to view live video. To allow the remote access, select **Options:Remote Access...** to open the dialog box.

1. Check **Enable Video Server** checkbox.
2. Specify **TCP port number** (Note: SecuExpress Remote has to have the same TCP port number so that you can connect to this video server).
3. Specify **the maximum number of connections** for the number of simultaneous connections allowed from remote computers.



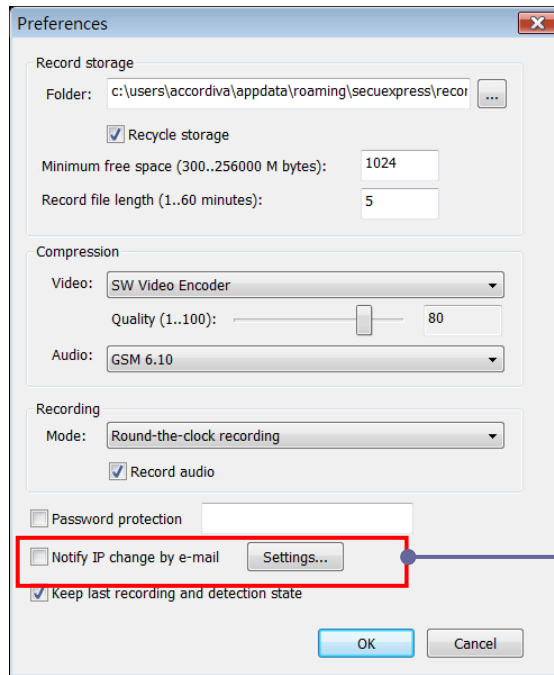
To view the current remote access connections, select **View:Show Remote Connections**.

### ***Notification of IP address change by e-mail***

Some dial-up Internet connections change IP addresses periodically. If your computer running SecuExpress Watcher has this type of Internet connections and you would like to watch the camera video remotely, you have to enable the option of **Notify IP change by email** in the **Preferences** dialog box by selecting **Options: Preferences....**

Click  button to specify the related email settings.

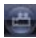




Check Notify IP change by email and specify the email settings here.

You will receive an email with a new IP address whenever the IP address is changed. Take the new IP address and update it in the SecuExpress Remote **Connect** dialog box. Please refer to SecuExpress Remote section(s) for more details.

## ***Searching video recording***

To search the video recorded, click  on the Control bar or select **Command:Search Records** to bring up SecuExpress Player to playback. See SecuExpress Player section for more details (Page 27).



## ***Playing live sound***

If your computer running SecuExpress Watcher is equipped with a microphone, select **Command:Play Live Sound** to play the sound received from the microphone.

## ***Resizing the main user interface for SecuExpress Watcher***

You can adjust the size of SecuExpress Watcher by dragging one of the corners of the main user interface when the menu bar is shown.

## ***Hiding the menu bar and status bar***

To further save your desktop space, you can hide the menu bar and the status bar by selecting **View:Menu Bar** and **View:Status Bar** to uncheck (hide) the bars. Alternatively, you can click  on the system bar to hide the menu and status bars altogether. To display the menu bar and the status bar again, select **View:Menu Bar** and **View:Status Bar** to check (show) the bars, or press  on the system bar.

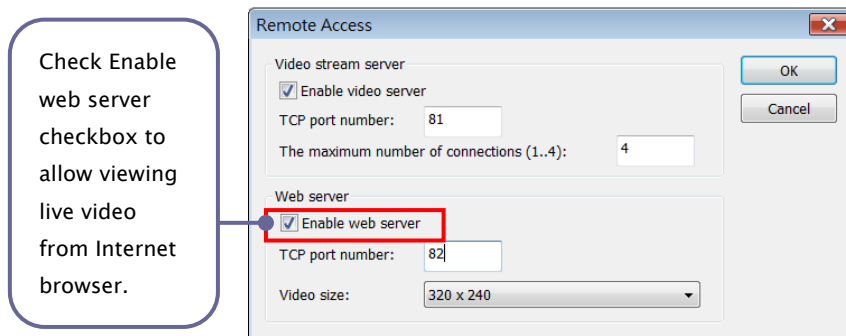


### ***Last recording and detection state at the next program restart***

You can use the same recording and detection state at the next SecuExpress Watcher launch. Simply check **Keep last recording and detection state** in the **Preferences** dialog box to save the recording and detection state.

### ***Watching live video in Internet browser***

SecuExpress Watcher allows you to view the live video by using Internet browser. To set the appropriate settings, select **Options:Remote Access...** to open the dialog box.



Check **Enable web server** in the dialog box and specify the **TCP port number** (use 80 as default) in **Remote Access** dialog box. Choose the video size for transmission.

Then, you can type **http://** <your IP address> : <TCP port number> (for example: **http://192.230.92:81**) of the computer running SecuExpress Watcher in your Internet browser to view the live video. ( Note: if your TCP port number is 80, you can omit it and only type **http://** <your IP address> )

## SecuExpress Remote for PC

### ***Overview: SecuExpress Remote for PC user interface***

SecuExpress Remote for PC provides you with various controls to view a remote camera video in SecuExpress Watcher.

#### **Main User Interface**



#### **Control Bar**



Take a snapshot

Connect/Disconnect to remote camera

## **Info Bar**

Indicate video transmission  
from SecuExpress Watcher

Indicate the speed of  
video streaming



Indicate the current  
system date and time at  
SecuExpress Watcher

Indicate a motion event is  
detected at SecuExpress Watcher

## **System Bar**



Close the program


Restore to original video size

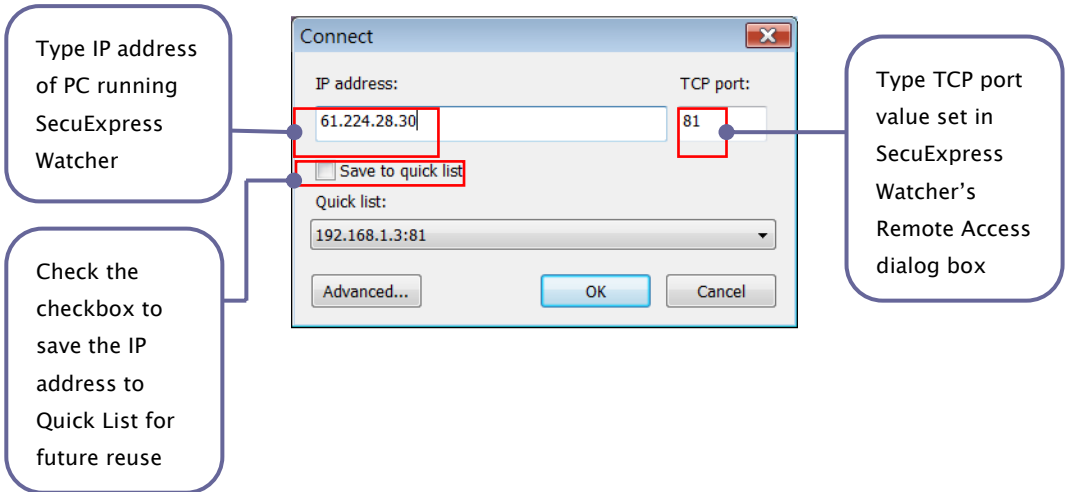
Minimize the program

Show/Hide menu bar and status bar

## Connecting to remote camera to view live video

Make sure your PCs running SecuExpress Watcher and Remote are connected to Internet.

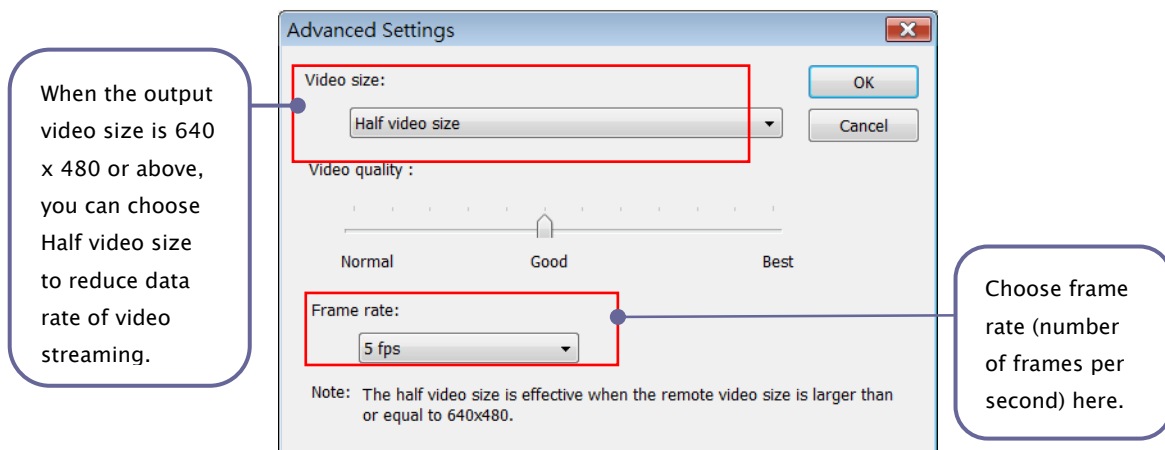
In SecuExpress Remote, click  on the Control Bar or select **Command:Connect** to set the connection options. In the **Connect** dialog box, type the IP address and TCP port number of PC that SecuExpress Watcher is running. (The TCP port value is defined in the dialog box of **Options:Remote Access** of SecuExpress Watcher program.) If you want to save the IP address for reuse in the future, check **Save to quick list** to save to the quick list so that you can select from the **Quick List** drop down list and do not need to retype each time.



Press **OK** to connect to the remote camera on PC running SecuExpress Watcher program to view live video.

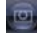
For advanced settings in video data transmission, click **Advanced** button in the **Connect** dialog box. In the **Advanced Settings** dialog box, you can adjust video dimension to **Half video size** if the output size is set to 640 x 480 or above in **Options:Video Capture Pin** of **SecuExpress Watcher** program. Select video quality for transmission by dragging the

slider of **Video quality** to define the quality you desire. You can also choose the frame rate to be transferred through the **Frame rate** drop down list.

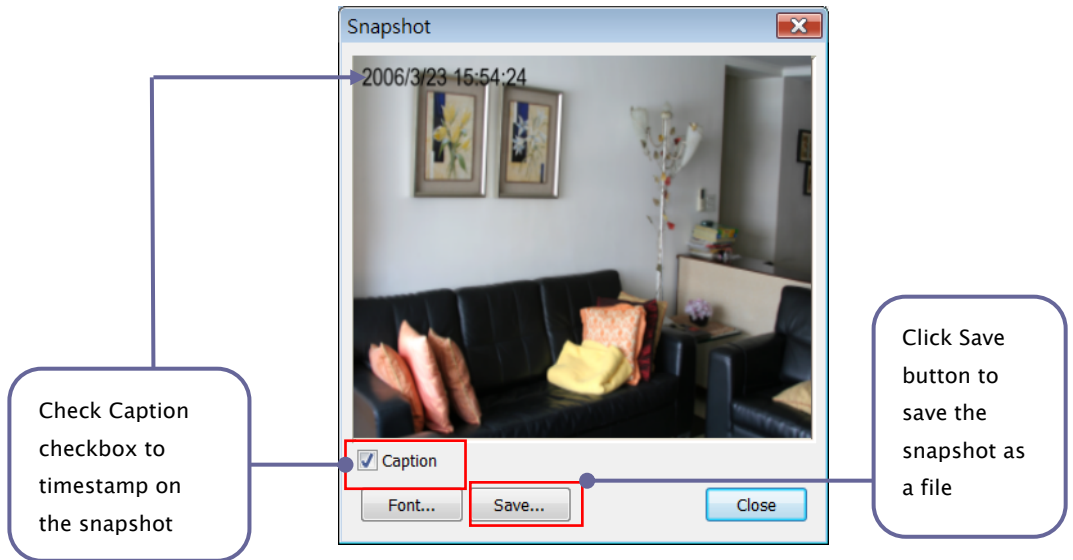


You can also only view the live video with event detected by selecting **View:Display Event Video Only** on the menu bar. This way saves Internet bandwidth when there is no event detected.

## Snapshot

To take a snapshot of the live video from a remote camera, select **Command:Snapshot...** from the menu bar or click . In the Snapshot dialog box, check Caption checkbox if you want to save the timestamp together with the snapshot. Click Save button to save it as a file.







## ***Resizing the main user interface for SecuExpress Remote for PC***


You can adjust the size of SecuExpress Remote by dragging one of the corners of the main user interface when the menu bar is shown.

## ***Hiding the menu bar and status bar***

To further save your desktop space, you can hide the menu bar and the status bar by selecting **View:Menu Bar** and **View:Status Bar** to uncheck (hide) the bars. Alternatively, you can click  on the system bar to hide the menu and status bars altogether. To display the menu bar and the status bar again, select **View:Menu Bar** and **View:Status Bar** to check (show) the bars, or press  on the system bar.

### ***Disconnecting from remote camera***

Once you are connecting to remote camera, you can choose

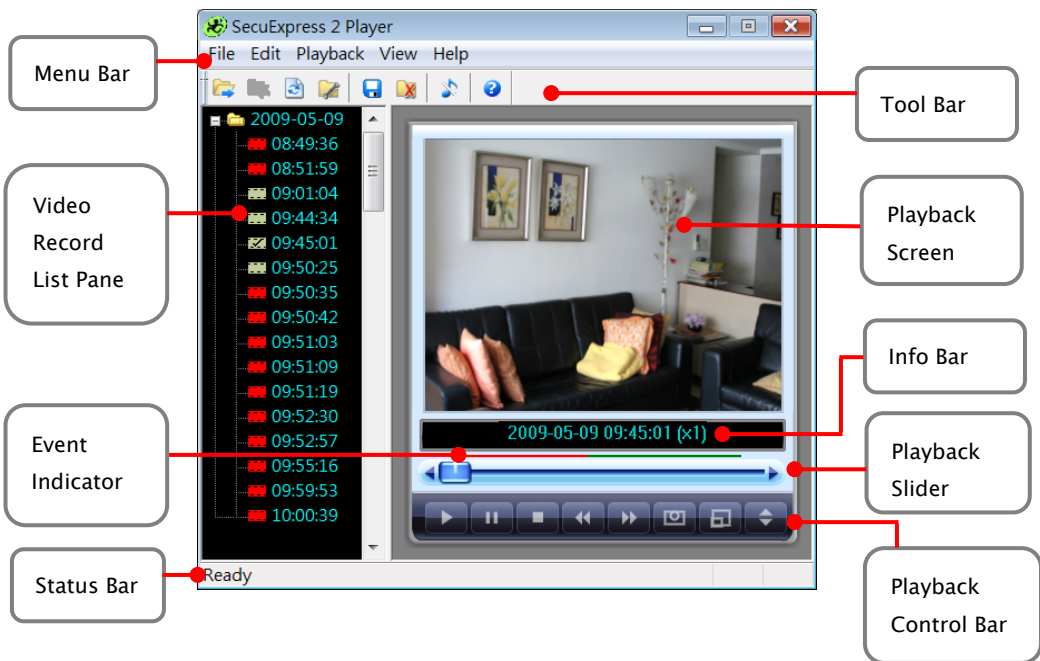
**Command:Disconnect** or click  again to disconnect from the remote camera.

## SecuExpress Player



### ***Overview: SecuExpress Player user interface***

SecuExpress Player provides you with various controls to view a remote live video on recorded in SecuExpress Watcher.

#### **Main User Interface**





### ***Playback of video recordings***

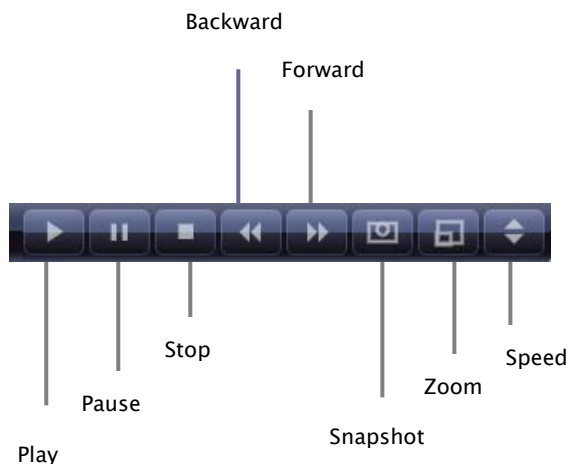
In the Video Record List Pane, you can see the list of files that are recorded and sorted by the sequence of time stamps. The video recordings with motion events detected are preceded by a red  icon. The video recordings without motion events detected are preceded by a green  icon.

Select the video recording file you want to playback from the Video Record List Pane. Use the buttons on Playback Control Bar to control the playback actions.

Drag Playback Slider to a snapshot with a particular time code you want to view.

Event Indicator indicates a motion event in red. Green portions represent no motion event detected. Use Backward  button or Forward  button to jump to the nearest starting point or the ending point of a motion event.

### **Playback Control Bar**



### ***Managing video recording database***

Your video recordings are saved in the folder specified in Preferences dialog box of SecuExpress Watcher. However, these video recordings can also be saved to another folder as a new video recording database in SecuExpress Player by **File:Save All Records to** menu. To

save a selected video recording, choose **File:Save Record to** from the Player's menu bar.

To open a video recording database you save previously, use **File:Open.Record DB**. To switch back to the current video recordings from a saved recording database, select **File:Return to Main Record DB**.

To update the Video Record List Pane with the latest video recordings that SecuExpress Watcher is recording, select **File: Update to Record DB**.

To delete a video recording, first select a video recording from the Video Record List Pane, and then choose **Edit:Delete Record**. To delete all records in the Video Record List Pane, choose **Edit:Delete All Records**.

When a video recording database is inconsistent in its data format or structure, you can use **Edit:Rebuild Record DB** to rebuild to data consistent state.

## Index

.

### A

**Advanced**, 23

### C

**Connect**, 17, 23

**Control Bar**, 7, 21, 23, 28

### D

**Delete All Records**, 29

**Delete Record**, 29

**Devices**, 10

**Disconnect**, 26

**Display Event Video**, 24

### E

**E-mail notification**, 14

**Enable Video Server**, 16

**Enable web server**, 20

**Event Notification**, 14

**Event recording**, 9

**Execute program**, 14

### F

**Frame rate**, 24

**Ftp event snapshots**, 14

### I

**Ignore short motion**, 13

**Info Bar**, 7, 22

### K

**Keep last recording and detection state**,  
19

### L

**Log**, 14

**Loop Playback**, 14

### M

**Main Record DB**, 29

main user interface, 18, 25

**Main User Interface**, 6, 21, 27

**maximum number of connections**, 16

**Menu Bar**, 18, 25

**Minimum free space**, 9

**Motion Detection**, 12, 13

**Motion Detection Mask**, 13

**Motion level threshold**, 12

**Motion volume threshold**, 12

### N

**Notify IP change by email**, 16

### O

**Open.Record DB**, 29

### P

password, 8, 11

**Play Live Sound**, 18

**Playback**, 28

**Playback Control Bar**, 28

**Preferences**, 8, 10, 11, 16, 19, 28

## **R**

**Rebuild Record DB**, 29

**Record**, 10, 29

**Record audio**, 11

**Record file length**, 9

**Record storage**, 9

**Recording Mode**, 10

**Recycle storage**, 9

**Remote Access**, 15, 20, 23

**Round-the-clock recording**, 9

## **S**

**Save All Records**, 29

**Save Record**, 29

**Save to quick list**, 23

**Search Records**, 17

**Show grids**, 13

**Show Remote Connections**, 16

**Show up program**, 14

**Snapshot**, 15, 24

**Sound alarm**, 14

**Status Bar**, 18, 25

**System Bar**, 7, 22

## **T**

**TCP port number**, 16, 20, 23

**Transparent mask**, 13

## **U**

**Update to Record DB**, 29

## **V**

**Video Capture Pin**, 23

**Video quality**, 24

**Video Record List Pane**, 27, 28, 29

**video size**, 20, 23